



# GMT MONTHLY MEMBERSHIP PROGRESS REPORT

Results as of: 2/28/2019

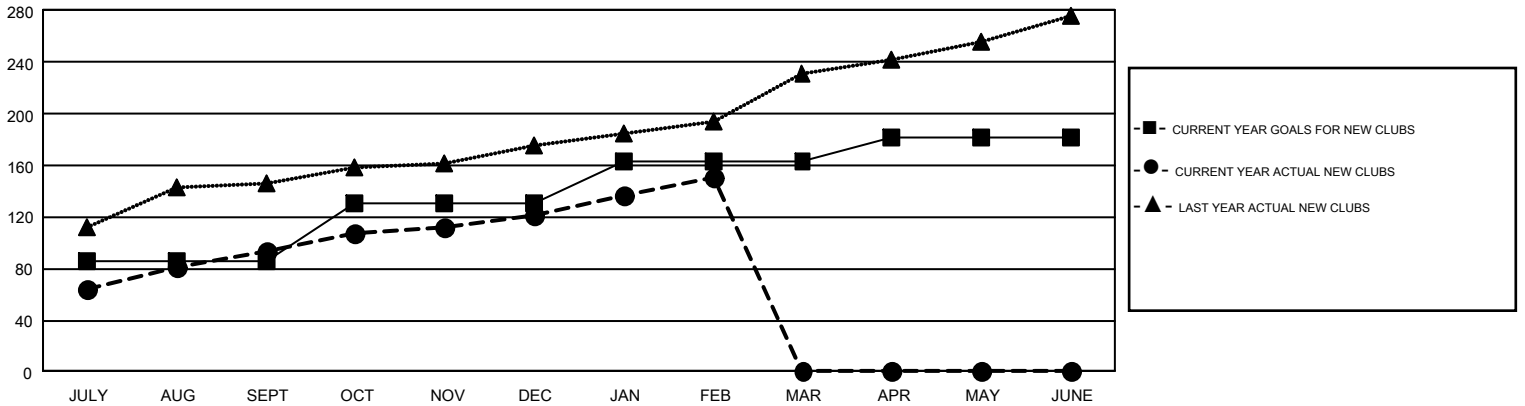
## GMT Constitutional Area 6, Group A

GMT: SWADESH RANJAN SAHA

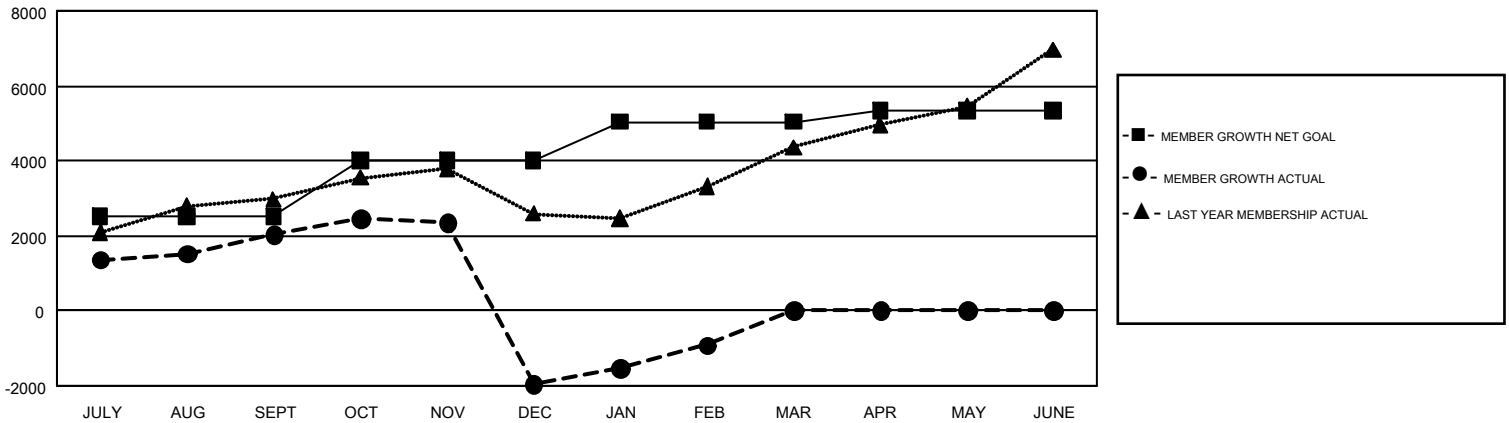
REPORT DOES NOT INCLUDE CLUBS IN UNDISTRICTED AREAS.

Clubs				Members			
RESULTS FOR 2018-2019				RESULTS FOR 2018-2019			
QUARTER	NEW CLUB GOAL	NEW CLUBS	DROPPED CLUBS	QUARTER	MEMBER GROWTH NET GOAL	MEMBER GROWTH ACTUAL	DROPPED MEMBERS ACTUAL (including transfers)
JULY/AUG/SEPT	86	94	22	JULY/AUG/SEPT	2,525	3,850	1,649
OCT/NOV/DEC	45	27	106	OCT/NOV/DEC	1,470	2,240	6,139
JAN/FEB/MAR	32	30	17	JAN/FEB/MAR	1,044	1,990	584
APR/MAY/JUNE	18	0	0	APR/MAY/JUNE	300	0	0

GOALS AND ACTUAL NEW CLUBS CUMULATIVE



GOALS AND ACTUAL MEMBERS CUMULATIVE



DROPPED CLUBS: 145	843 CLUBS OF 1,814 ADDED 1 OR MORE NEW MEMBERS	<b>GENDER DISTRIBUTION</b> MALE                    41,580 (72.68%) FEMALE                 15,627 (27.32%)
<b>DROPPED MEMBERS</b> DECEASED                    82 CLUB CANCELLED            3,926 OTHER                         4,365 <hr/> TOTAL                         8,373	<a href="#">CLICK HERE FOR CUMULATIVE MEMBERSHIP DATA</a>	TOTAL FAMILY UNIT MEMBERS                    25,860  FAMILY MEMBERS PAYING HALF DUES                    15,817